

**MANTASOA (MADAGASCAR) MOUNTAIN TOP INTERACTION
30 OCT – 06 NOV 2021**

ORGANIZATION:

The Madagascar (Mantaso) Mountain Top Interaction is planned from October 30 to November 6, 2021

- Oct. 30th – Nov.04th at the “Domaine de l’Ermitage de Mantaso”. The only place with a capacity of 50 pax in Mantaso. We chose Mantaso which is located at 68 km from Tana, on a mountain, beside of a lake and a park. It is a site very favorable to the connection with nature and allowing to have a serenity to better meet the Lord.
- Nov. 05th-06th at Motel Anosy, Antananarivo

Depending on the availability of scheduled flights at this time, the program for the last 2 days is subject to change.

PROGRAM (DRAFT)

SAT, 30 OCT 21

Ser	Time	Event	Venue	Lead	Remarks
	a	b	c	d	e
1		Delegates arrive	Domaine de l’Ermitage Mantaso (DEM)		Administration, including: Registration; Accommodation allocation; Programme distribution; Welcome pack distribution; Contact details
2	1300	Lunch			
3	1400 1600				
4	1600 1800	Walking...			(Circuit to be defined)
5	1900	Supper			
6	2000	Game - Ice breaker			
7	2100	Worship and prayer			

SUN, 31 OCT 21

Ser	Time	Event	Venue	Lead	Remarks
	a	b	c	d	e
1	0530	Wakey Wakey			
2	0630	Breakfast			
3	0730	Departure to Manjakandriana			
4	0900	Church service	Military Chapel Manjakandriana		Organization TBA

	1100	Visit of BG Barracks	BG Barracks		
5	1300	Lunch			Possibility BG Barracks/Organization TBA
6	1400	Visit ???			Site at Manjakandriana or Mantasoa TBA
7	1700	Departure to MANTASOA			
8	1900	Supper			
9	2000	Worship and prayer			

MON, 01 NOV 21

Ser	Time	Event	Venue	Lead	Remarks
	a	b	c	d	e
1	0630	Wakey Wakey			
2	0700	Worship			
3	0730	Breakfast			
4	0830	Official Opening & Photograph			
5	0900-1030	Delegate Introduction			All delegates present a short introduction of themselves (My Life type talk/presentation)
6	1030	Tea			
7	1100-1145	Introduction, History & Role of MCF & SAMCF			
8	1145-1230	Support Organisations (ACCT,MMI,MSO,AFCU)			
9	1230	Lunch			
10	1330-1415	Military & Christianity – Is it a Contradiction?			
	1430-1515	Role of the Chaplaincy			
11	1530	Tea			
12	1600-1745	Warrior training			
13	1900	Supper			
14	2000-2100	Reflection on biblical themes (Part 1)			Phil 2.1-11 Encouragement to be humble
15	2100	Closing Worship & Prayer			

TUE, 02 NOV 21 (Nosy Soa Park Excursion)

Ser	Time	Event	Venue	Lead	Remarks
	a	b	c	d	e
1	0630	Wakey Wakey			
2	0700	Breakfast			
3	0745-0830	Depart to Nosy Soa Park			
4	0900-1100	Connection with nature	Nosy Soa Park		Park visit
5	1130	Biblical Leadership			
6	1230	Lunch			
7	1330-1430	Inductive Bible study			
8	1430-1530	Personal Evangelism			
9	1530	Tea			
10	1600-1645	Role of, and Leading of Small Groups			
	1645-1730	Depart to the Hotel			
11	1730-1800	Sunset Walk			
12	1900	Supper			
13	2000-2100	Reflection on biblical themes (Part 2)			Phil 2.1-11 Encouragement to be humble
14	2100	Closing Worship & Prayer			

WED, 03 NOV 21 (Hiking Day)

Ser	Time	Event	Venue	Lead	Remarks
	a	b	c	d	e
1	0700	Wakey Wakey	Hut		
2	0720	Quiet time followed by Sunrise Worship			
3	0830	Breakfast			
4	0930-1200	Prayer & Reflection			Hiking around Mantasoa & Talk (Circuit to be defined)
5	1230	Lunch			
6	1400	Personal testimonies			
7	1530	Tea			
8	1600	Depart for the Hotel			By car

9	1900	Supper			
10	2000	Worship and prayer			

THU, 04 NOV 21

Ser	Time	Event	Venue	Lead	Remarks
	a	b	c	d	e
1	0630	Wakey Wakey			
2	0700	Walk			
3	0730	Sunrise Prayers			
4	0830	Breakfast			
5	0930-1030	Conversational Prayer			
6	1030	Tea			
7	1100	Closing ceremony			
8	1200	Lunch			
9	PM	Departure to Antananarivo			
		Arrival at Hotel Antananarivo			
10	1900	Supper			
	2000	Worship and prayer			

FRI, 05 NOV 21

Ser	Time	Event	Venue	Lead	Remarks
	a	b	c	d	e
1	0700	Wakey Wakey			
2	0730	Breakfast			
3	0800	Free Time for Shopping and/or Tourism			Organization TBA
4	1200	Lunch			
5	1400	Free Time for Shopping and/or Tourism			
6	17.30	Free Time for Shopping and/or Tourism			
7	1900				
8	2000	Worship and prayer			

SAT, 06 NOV 21

Ser	Time	Event	Venue	Lead	Remarks
	a	b	c	d	e
		Delegates Depart			

PARTICIPANTS:

Directing staff = 05 -10 pax (?) (Malagasy + Foreigners)

Young leader = 30 pax (Malagasy = 10 / Foreigners = 20)

Total = 35-40?

COSTS PER PERSON:

Here are the two possibilities considered. The difference between the local and foreign participation is the accommodation in Antananarivo.

1. Participants accommodated in a 15-bed bungalow and trainers in the same hotel in a 2-bed room

Setting: Foreign 370 USD, Local 320 USD

Participant: Foreign 290 USD, Local 234 USD

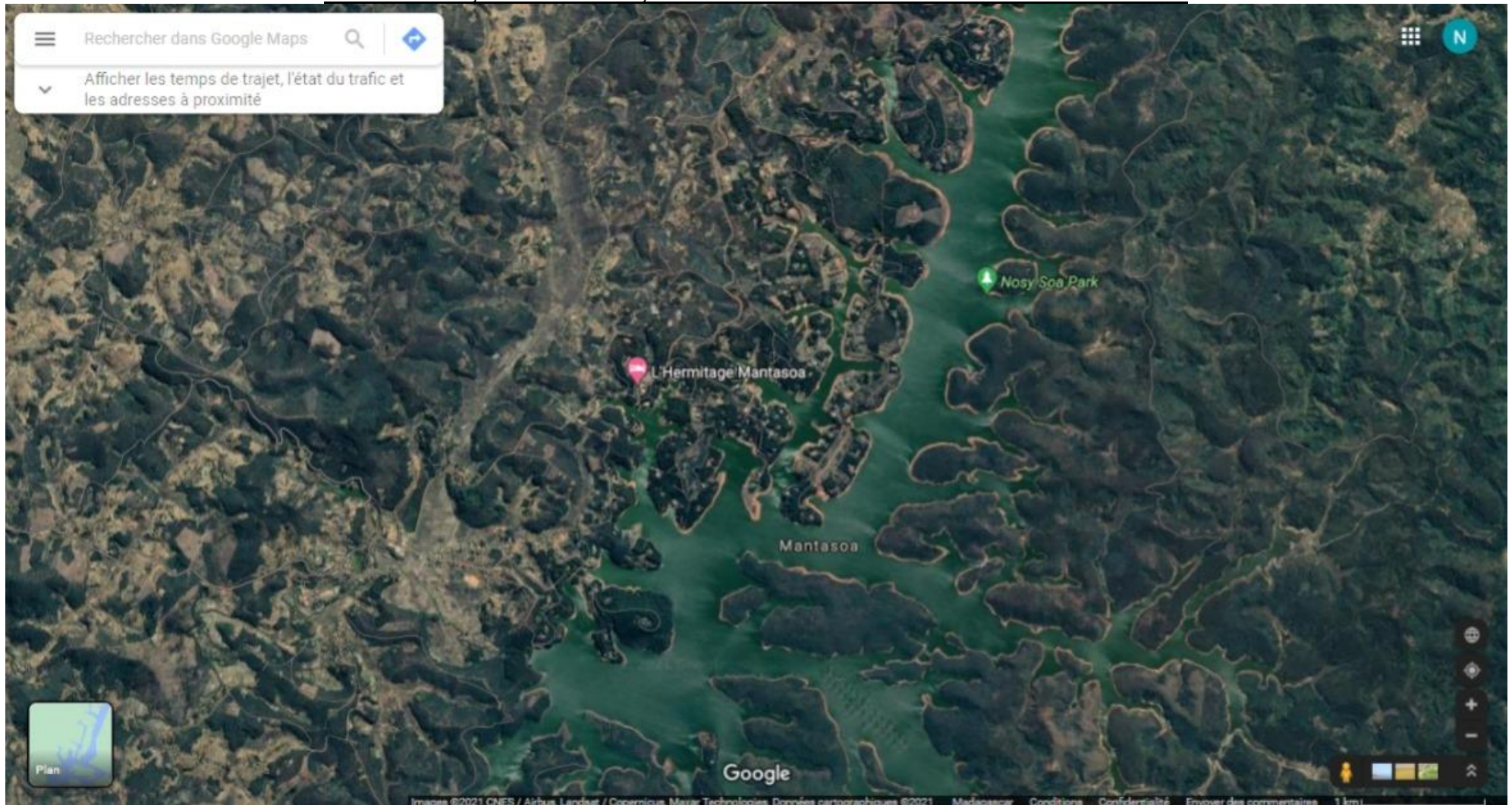
2. Everyone accommodated in a room with 2 beds

Single participation: Foreign 370 USD, Local 320 USD

(The details in the excel sheet.)

Other photos and more information about Mantasoa, Domaine de l'Ermitage and Nosy Soa Park are available on the internet.

MADAGASCAR,ANTANANARIVO,DOMAINE DE L'ERMITAGE MANTASOA LOCALISATION



DOMAINE DE L'ERMITAGE MANTASOA



CONFERENCE ROOM



BUNGALOW FOR 15 PAX





NAVIGATION TO NOSY SOA PARK AND CONFERENCE SPACE

